

EHS Solutions

Strategic EHS Information Management

EHS Solutions helps our clients address their strategic environment, health, and safety (EHS) information management business goals and objectives through the delivery of professional services based upon information technology solutions.

A Comprehensive, Integrated Approach

Industry analysts report that EHS managers and professionals are spending more than two-thirds of their time trying to manage data and information associated with day-to-day operations.

Many organizations spend so much time collecting data that they have little time left to use information to improve their business performance. A cost-effective, sustainable

EHS **information management strategy** enables an organization to progress in an accelerated fashion towards the goal of world-class excellence in EHS performance.

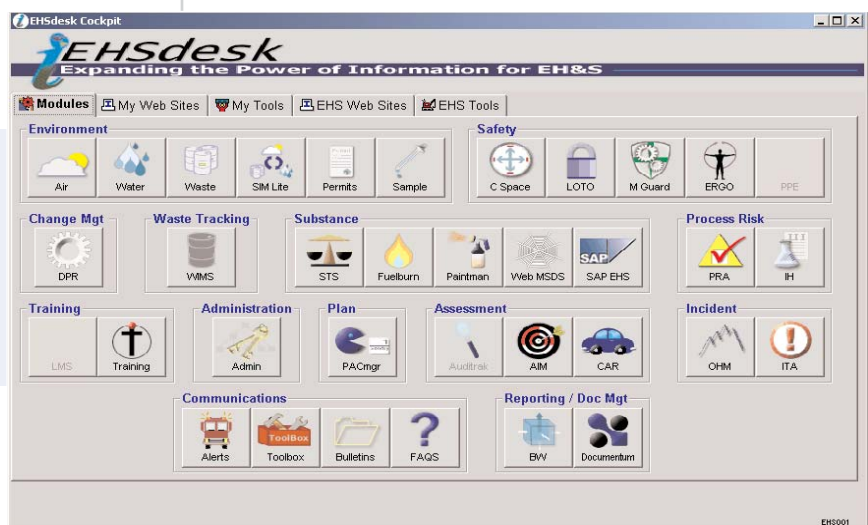
EHS Solutions presents **EHSdesk**, a comprehensive, integrated suite of software applications designed to support administrative, operational, and business process information associated with EHS management.

EHSdesk provides a fully integrated set of EHS best practices and processes embodied in an information technology solution that can be customized to meet your needs.

EHS Solutions' technical proficiency is complemented by the vast resource of domain expertise within The Shaw Group.

Features and Functionality

- Single point of logon
- Integrated modules that provide consistency for common functionality
- Centralized relational database
- Modules can be implemented independently
- Multiple location and facilities support
- User level security permissions
- Configurable at the system, site, and individual user level
- Automatic e-mail reminders and notification
- Customizable access to system recommended and personal web sites and files (e.g., Microsoft ExcelTM, Microsoft AccessTM, etc.)
- Proactive visual notification of newly posted Safety Alerts, Bulletins, or Toolbox Topics (helpful hints)



The EHSdesk Cockpit is the launch point for the EHSdesk modules, additional tools (Safety Alerts, Bulletins, Toolbox Talks), and third-party applications. Refer to the opposite side for a brief description of each EHSdesk module.

EHSdesk Administration

- **EHSdesk Administration** — Perform system and master data maintenance
- **Planning & Calendar Manager (PACmgr)** — Track annual and other strategic plan items/resources/targets/objectives to completion; fully integrated EHS calendar reminder system allows proactive tracking of time-based data

Assessment

- **Assessment Information Management (AIM)** — Track questions, checklists, and responses necessary to perform various assessments
- **Corrective Action Request (CAR)** — Track tasks necessary to perform corrective action investigations

Process Risk

- **Process Risk Assessment (PRA)** — Identify, prioritize, and control risks to worker safety and the environment through process, steps, hazards, and controls identification
- **Industrial Hygiene Qualitative (IHQ)** — Identify and prioritize worker chemical and physical exposure through process and stressor identification and qualitative ranking

Incident Tracking & Analysis (ITA) — Automate the maintenance and tracking of EHS incidents such as injuries, accidents, and spills

Environment

- **Air** — Manage EHS air media information associated with equipment inventory, materials/processes per equipment, stack inventory, emissions, and create air emission reports
- **Water** — Manage EHS water compliance data associated with equipment, drain and discharge point/NPDES inventory, and discharge/flow
- **Waste** — Manage waste characterization information associated with equipment
- **Permit** — Manage permits, orders, licenses, and registrations, including regulating agencies, with a feed to the calendar for reminders
- **SIM Lite** — A simplified version of Environment (Air/Water/Waste) with a spreadsheet-like interface to manage equipment, stacks, drains, and waste
- **Sample Lite** — Manage data collected during various sampling processes including sample lab, sample log, and sample results; lab results import with standard file format available

Safety

- **Confined Space (CS)** — Profile pertinent descriptive information about areas at a facility that may be considered confined spaces
- **Lock Out / Tag Out (LOTO)** — Capture energy control procedure (ECP) information for a given piece of equipment

- **Machine Guard (MG)** — Document equipment-specific machine guard assessment and inventory information
- **Ergonomics (ERGO)** — Provide a global common process and data management system by which ergonomic practices and information can be managed and shared

Design Process Review (DPR) — Provide a mechanism to ensure facility modifications, chemical changes, equipment moves, procurement, and process modifications are reviewed for EHS and facilities impacts

Substance

- **Substance Tracking (STS)** — Track and manage the substance and chemical usage for purposes of regulatory reporting; centralized repository for master substance data to support all EHSdesk applications
- **Fuel Burn** — Submodule of STS to support the collection, real-time monitoring, and reporting on fuel burning emissions to meet state and federal regulations
- **Paintman** — Submodule of STS to support the collection, real-time monitoring, and reporting on air permit compliance for paint booth emissions to meet state and federal regulations

Waste Information Management

- (WIMS) — Track all controlled wastes from point of generation (POG) to final disposition

EHSdesk Module	Regulatory	ISO 14001/ OHSAS 18001
EHSdesk Admin		
Admin		
Planning & Calendar Manager (PACmgr)		■
Assessment		
Assessment Information Management (AIM)		■
Corrective Action Request (CAR)		■
Process Risk		
Process Risk Assessment (PRA)	■	■
Industrial Hygiene Qualitative (IHQ)	■	■
Incident Tracking & Analysis (ITA)		
ITA	■	■
Environment		
Air	■	■
Water	■	■
Waste	■	■
Permit	■	■
SIM Lite	■	■
Sample Lite	■	■
Safety		
Confined Space (CS)	■	■
Lock Out / Tag Out (LOTO)	■	■
Machine Guard (MG)	■	■
Ergonomics (ERGO)	■	■
Design Process Review (DPR)		
DPR	■	■
Substance		
Substance Tracking (STS)	■	■
Fuel Burn	■	■
Paintman	■	■
Waste Information Management (WIMS)		
WIMS	■	■